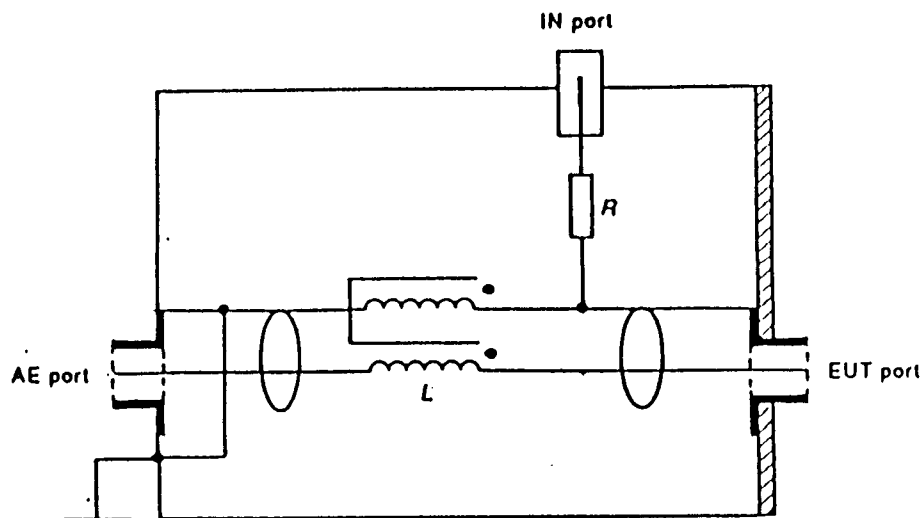


Coupling-Decoupling Network

C D N L-801 S 1 / 75 Ohm

IEC 61000-4-6

AE Port	BNC 75 Ohm
EUT Port	BNC 75 Ohm
Leads	Coaxial cable 75 Ohm
Max. Voltage	100 V
Max. Current	0,25 A
IN Port	BNC 50 Ohm
Frequency range	0,15 ... 230 MHz
HF Power Dissipation	4 Watt



SCHWARZBECK MESS - ELEKTRONIK

Tel.: +49(0)6228/1001 www.schwarzbeck.de office@schwarzbeck.de

L 801 S1-75



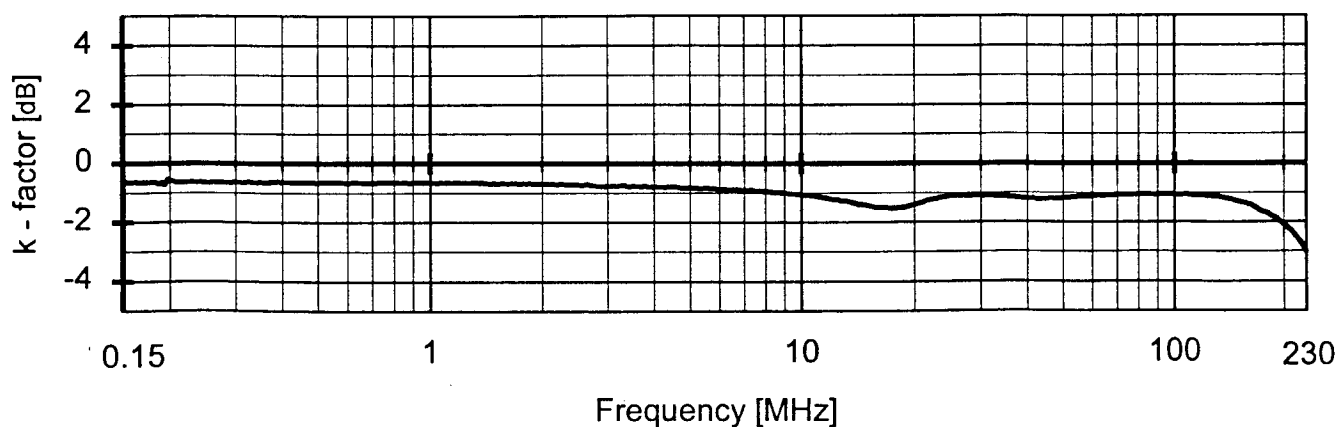
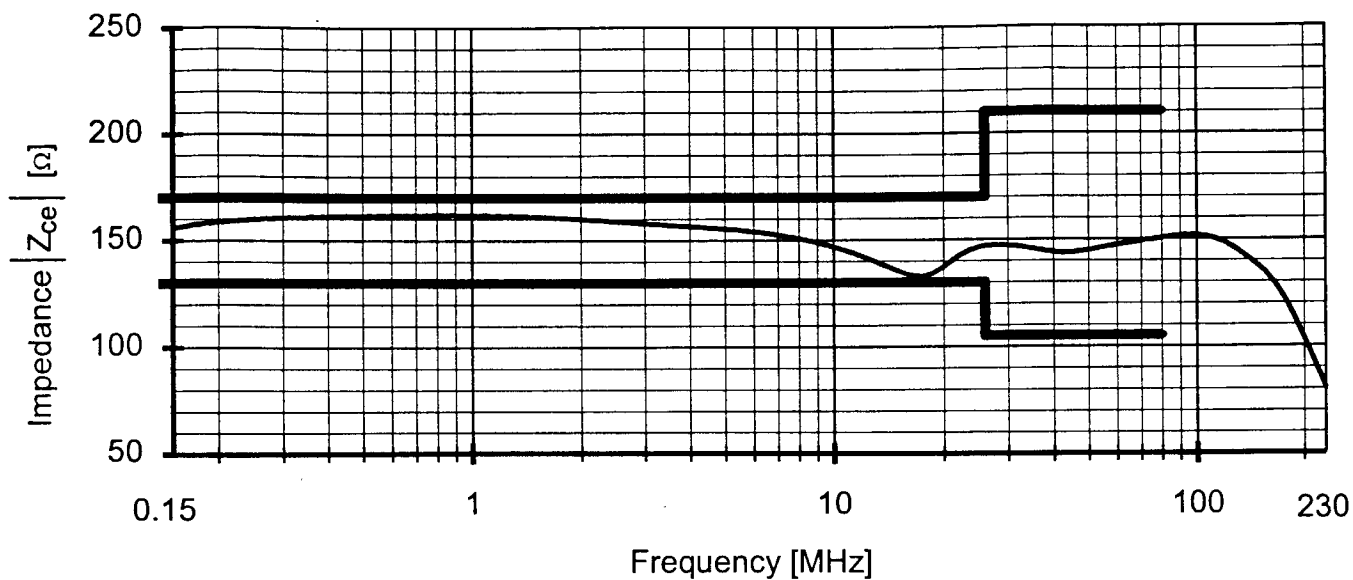
CDN, Koaxial 75 Ohm BNC



CDN Coaxial 75 Ohm, BNC 75 Ohm

**CDN Impedance and K-factor
in the frequency range 150 kHz - 230 MHz
in a test setup according to IEC 61000-4-6**

CDN Type S1/75



Equipment used:

Network Analyzer Typ ZVR
50 Ω to 150 Ω Adaptor
50 Ω to 150 Ω Adaptor

Inv. Nr. 4110
Inv. Nr. 4159
Inv. Nr. 4160

Location:

Reference for K-factor
Measurement Impedance
Measurement K-factor

EB15

Date and time:

2002.04.26 11:14
2002.08.16 08:53
2002.08.16 09:06